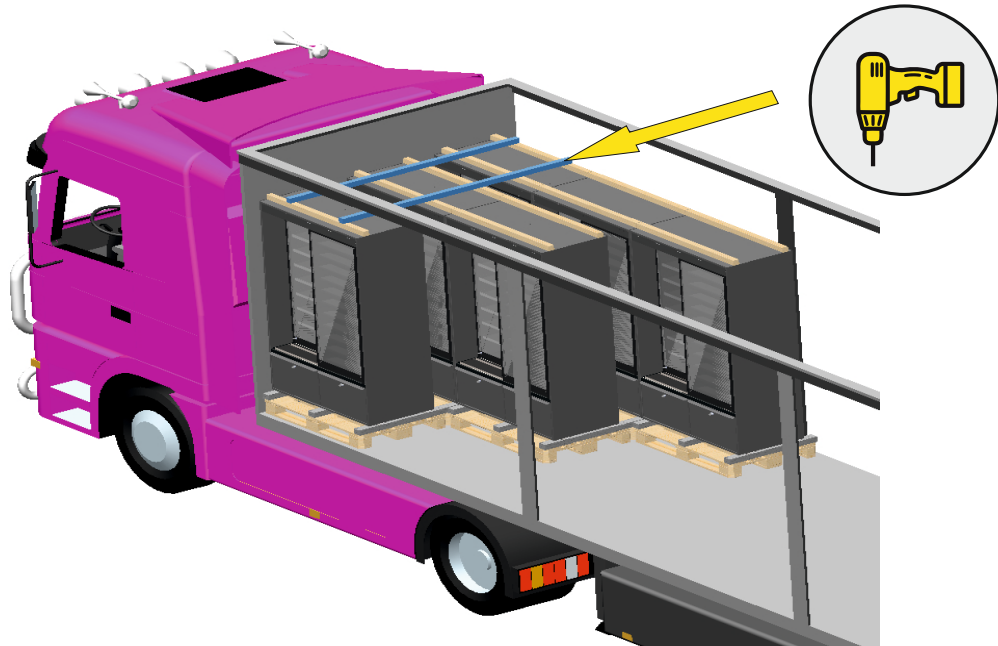


TOBACCO CABINET UNLOADING INSTRUCTIONS

1. Before unloading remove the Anti-Sway Crossbars



DO NOT CUT THE BLACK PLASTIC CORDS UNTIL THE CABINET IS IN ITS FINAL INSTALLATION POSITION !

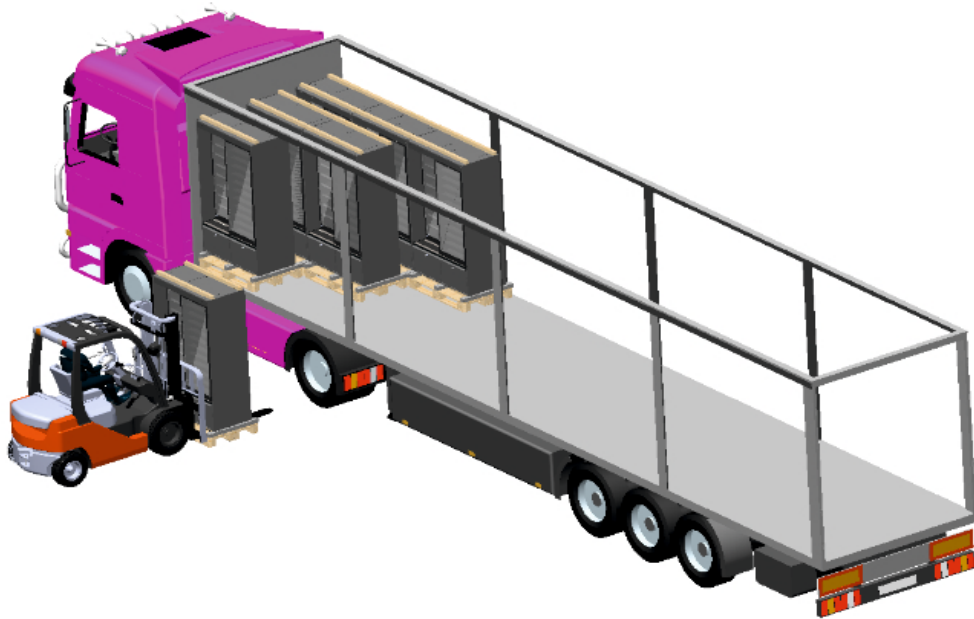


- Remove the anti-sway crossbars from above the packed cabinets before unloading.
- Start removing the anti-sway crossbars with the first line of cabinets from the back of the truck.
- You will find screws at every intersection of the wooden bars.
- **DO NOT CUT THE BLACK PLASTIC CORDS UNTIL THE CABINET IS IN ITS FINAL INSTALLATION POSITION !**

2. Unloading the Truck and Handling Cabinets

Product packed on Euro pallet | Estimated weight: 300 kg

- Start unloading from the back of the truck
- Required equipment: standard forklift truck.
- Position the forklift in front of the pallet, centering the forks under the pallet.
- Carefully lift the packed cabinet, avoiding any swinging or tilting.
- Lower the pallet slowly and steadily, avoiding sudden movements.



- The cabinet must be transported only on the Euro pallet.
- For short distances or inside the store, use a manual pallet truck (hand pallet jack).
- Ensure the path is clear and the floor is flat.